

Total avoidable mortality (AM) in Victoria from 1997 to 2003

Definitions

Avoidable mortality (AM) refers to deaths classed as untimely and unnecessary – deaths from diseases for which effective public health and/or medical interventions currently exist – in those aged under 75 years.

Fifty-six conditions currently meet these requirements. All other deaths in people aged less than 75 years are considered unavoidable. Deaths in those aged 75 years and over are also considered unavoidable and not included in the analyses.

Key AM findings

Total AM rates significantly declined for both men and women between 1997 and 2003. Rates are expected to further decline if this trend continues.

The decline in total AM rates is much greater than the decline observed for unavoidable deaths between 1997 and 2003, suggesting a improvement in the healthcare system over the period.

The total AM rate in Victoria was significantly higher for men than women.

Disadvantage and location

The highest rates of total AM among men were in those who lived in rural areas, were in the most disadvantaged socio-economic group or had the least access to services, including healthcare. See table 1.

The highest rates of total AM among women were in the most disadvantaged socio-economic group. Women who lived in rural areas only had significantly higher rates during three of the report's seven years (1998, 2002 and 2003), while those who lived in the least accessible areas only had significantly higher rates in one year. See table 2.

General information

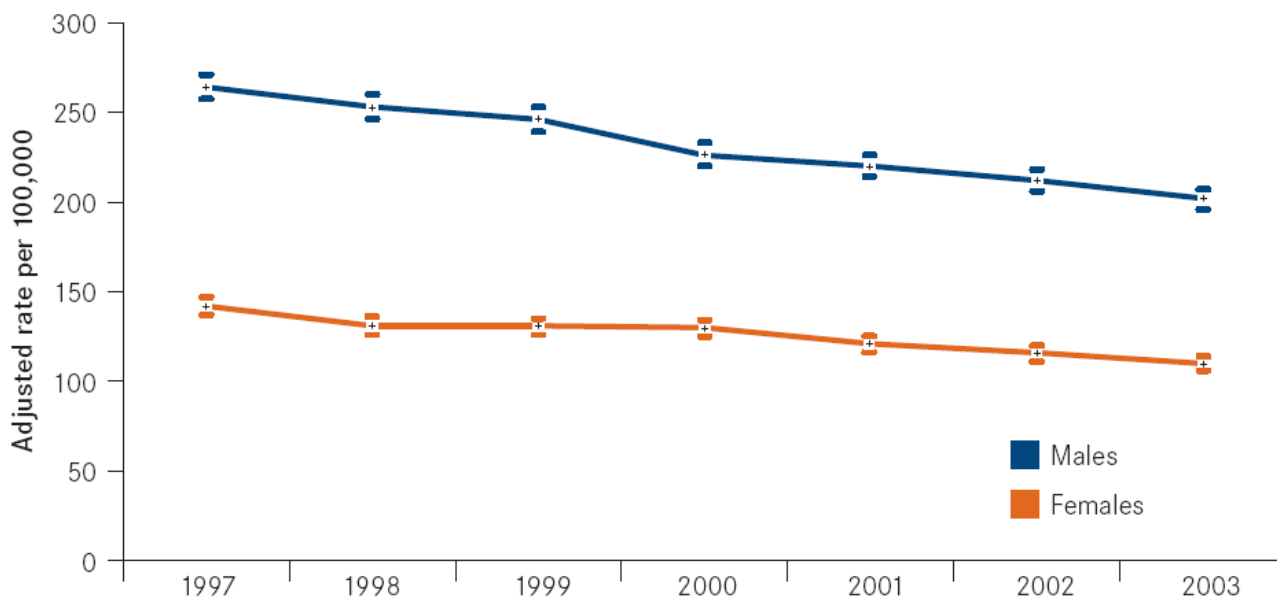
This fact sheet is an adjunct to *Avoidable Mortality in Victoria: Trends between 1997 and 2003*, the first comprehensive report on AM in Victoria which provides a detailed examination of the 10 most common causes of AM, which together account for 50% of deaths in the state during this period.

The report is compiled via a simple and practical Victoria-wide, population-based method of counting AM rates.

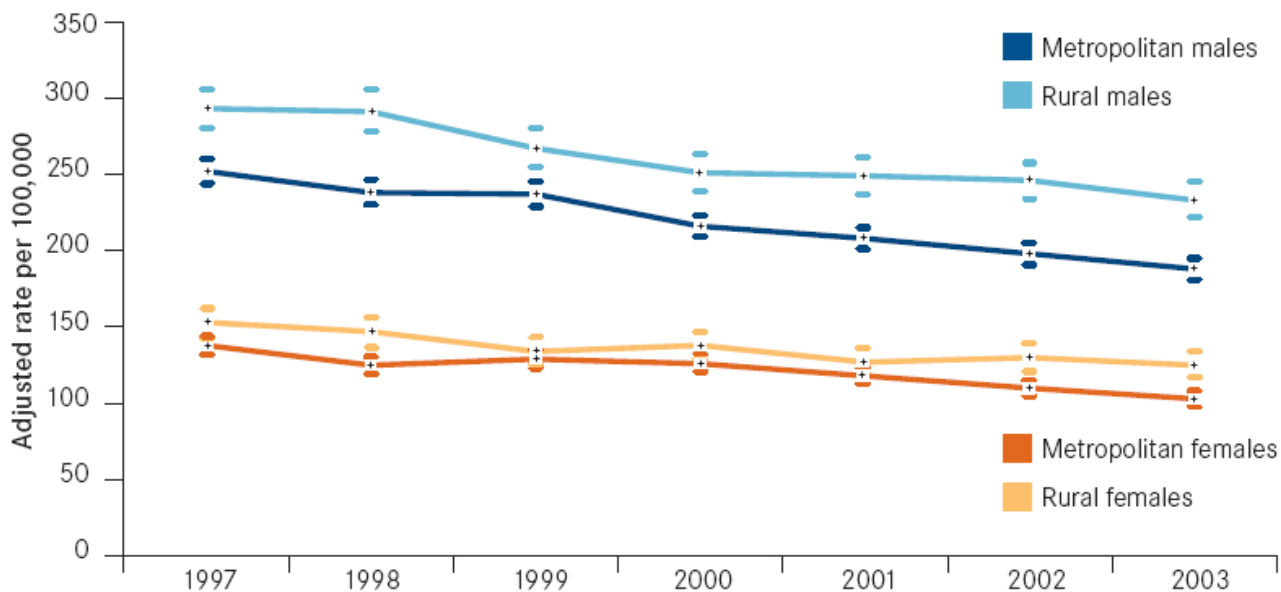
Declining trends in AM may indicate improvements in the healthcare system.

Increasing trends in AM may indicate shortcomings in the healthcare system, such as a lack of use of effective interventions.

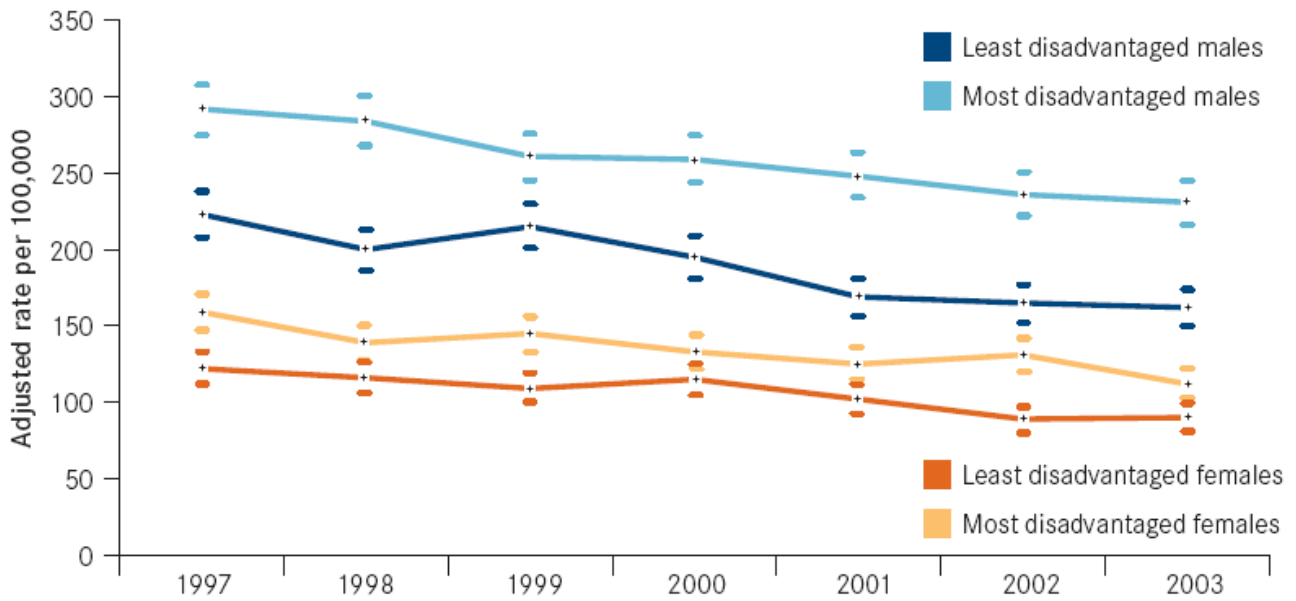
Trends in total avoidable mortality (AM) in Victoria from 1997 to 2003



Total Victorian AM rates by sex and location (rural/metropolitan) from 1997 to 2003



Total Victorian AM rates by sex and disadvantage from 1997 to 2003



Total Victorian AM rates by sex and accessibility from 1997 to 2003

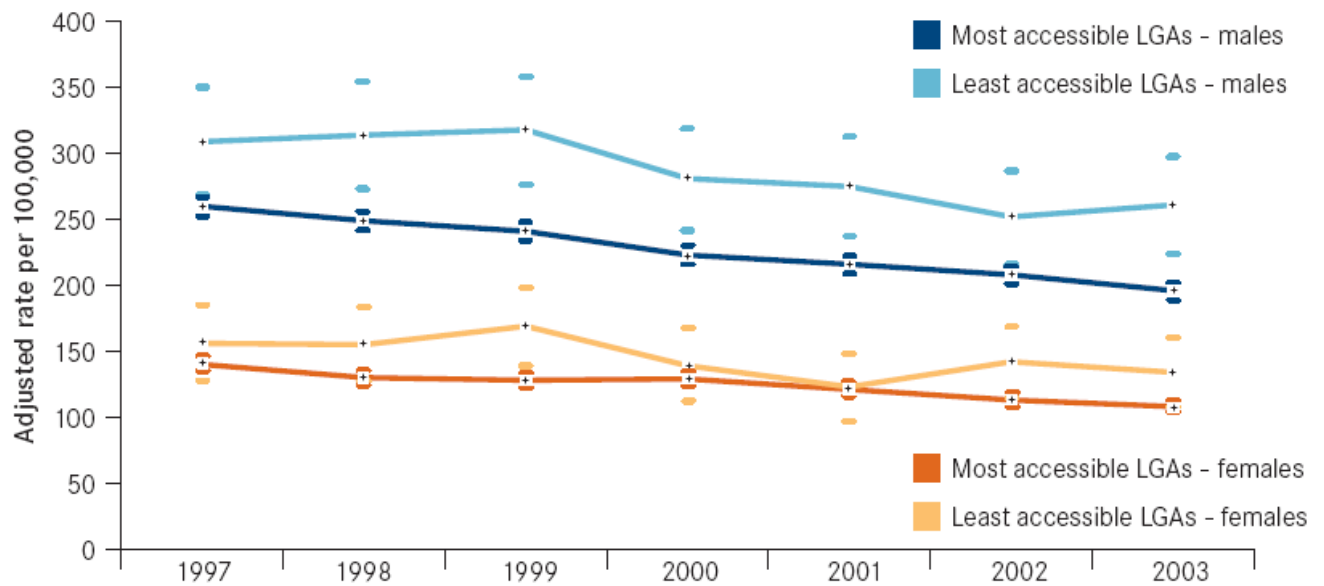


Table 1: Adjusted total AM rates (95% CI) in Victorian men from 1997 to 2003

		Males (rate per 100,000)																				
		1997			1998			1999			2000			2001			2002			2003		
		Adjusted	95%CI		Adjusted	95%CI		Adjusted	95%CI		Adjusted	95%CI		Adjusted	95%CI		Adjusted	95%CI		Adjusted	95%CI	
Victoria		264	257	271	253	246	260	246	239	253	226	220	233	220	214	226	212	206	218	202	196	207
Metropolitan		252	244	260	238	230	246	237	229	245	216	209	223	208	201	215	198	191	205	188	181	195
Rural		293	280	306	291	278	305	267	255	280	251	239	263	249	237	261	246	234	257	233	222	245
IRSED category:																						
Most disadvantaged		292	275	308	284	268	301	261	245	276	259	244	275	248	234	263	236	222	251	231	216	245
2		279	264	295	280	264	295	255	240	269	248	233	262	246	232	260	240	226	254	223	209	236
3		290	273	306	267	252	282	270	255	286	234	220	249	228	214	242	223	210	237	215	202	228
4		237	223	252	233	218	247	228	214	242	194	182	207	206	192	219	192	180	205	174	162	186
Least disadvantaged		223	208	238	200	186	213	215	201	230	195	181	209	169	156	181	165	152	177	162	150	174
ARIA category:																						
Accessible		295	269	322	286	260	312	271	246	297	245	221	269	253	229	278	249	224	273	251	226	275
Highly Accessible		260	252	267	249	242	256	241	234	248	223	216	230	216	209	222	208	201	214	196	189	202
Moderately accessible		309	269	350	314	273	355	318	277	358	281	242	319	275	237	313	252	216	287	261	224	298
Rate ratios:																						
Male:Female		1.86			1.93			1.89			1.75			1.82			1.84			1.84		
Rural:Metro		1.16			1.23			1.13			1.16			1.20			1.24			1.24		
Most:Least disadvantaged		1.31			1.42			1.21			1.33			1.47			1.43			1.42		
Least:Most accessible		1.19			1.26			1.32			1.26			1.28			1.21			1.34		

Note: Adjusted rates are significantly different (P<0.05) when their 95% confidence intervals do not overlap
 Adjusted rates and rate ratios in **RED** are significantly greater (P<0.05) than the corresponding rate for Victoria or 1, respectively
 Adjusted rates and rate ratios in **GREEN** are significantly lower (P<0.05) than the corresponding rate for Victoria or 1, respectively

Table 2: Adjusted total AM rates (95% CI) in Victorian women from 1997 to 2003

		Females (rate per 100,000)																				
		1997			1998			1999			2000			2001			2002			2003		
		Adjusted	95%CI		Adjusted	95%CI		Adjusted	95%CI		Adjusted	95%CI		Adjusted	95%CI		Adjusted	95%CI		Adjusted	95%CI	
Victoria		142	137	147	131	126	136	131	126	135	130	125	134	121	116	125	116	111	120	110	106	114
Metropolitan		138	132	144	125	119	130	129	123	135	126	121	132	118	113	123	110	105	115	103	98	108
Rural		153	143	162	147	137	156	134	126	143	138	129	147	127	119	136	130	121	139	125	117	134
IRSED category:																						
Most disadvantaged		159	147	171	139	127	150	145	133	156	133	122	144	125	115	136	131	120	142	112	103	122
2		144	134	155	147	136	158	144	133	155	138	128	149	129	119	139	127	117	137	121	112	131
3		152	141	164	135	124	146	135	124	146	138	127	149	130	120	140	120	110	130	114	105	124
4		134	124	145	120	110	130	121	111	131	121	111	131	117	108	127	111	102	120	107	97	116
Least disadvantaged		122	112	133	116	106	126	109	100	119	115	105	125	102	92	111	89	80	97	90	81	99
ARIA category:																						
Accessible		161	142	181	140	122	159	141	122	159	138	120	157	118	101	134	133	115	150	112	96	129
Highly Accessible		140	135	146	130	125	135	128	123	133	129	124	134	121	116	126	113	109	118	108	104	113
Moderately accessible		156	128	185	155	127	183	169	139	198	139	112	167	123	97	148	142	115	169	134	108	160
Rate ratios:																						
Male:Female																						
Rural:Metro		1.10			1.17			1.04			1.10			1.08			1.18			1.21		
Most:Least disadvantaged		1.30			1.20			1.32			1.16			1.23			1.48			1.25		
Least:Most accessible		1.11			1.20			1.31			1.08			1.01			1.25			1.24		

Note: Adjusted rates are significantly different (P<0.05) when their 95% confidence intervals do not overlap
 Adjusted rates and rate ratios in **RED** are significantly greater (P<0.05) than the corresponding rate for Victoria or 1, respectively
 Adjusted rates and rate ratios in **GREEN** are significantly lower (P<0.05) than the corresponding rate for Victoria or 1, respectively

Information in this fact sheet is taken from the report, *Avoidable Mortality in Victoria: Trends between 1997 and 2003*