

Avoidable mortality (AM) in Victoria from 1997 to 2003 due to *suicide*

Definitions

Avoidable mortality (AM) refers to deaths classed as untimely and unnecessary – deaths from diseases for which effective public health and/or medical interventions currently exist – in those aged under 75 years.

Fifty-six conditions, including *suicide*, currently meet these requirements. All other deaths in people aged less than 75 years are considered unavoidable. Deaths in those aged 75 years and over are also considered unavoidable and not included in the analyses.

Key AM findings on *suicide*

Suicide was the fourth leading cause of avoidable mortality (AM) between 1997 and 2003.

Avoidable *suicide* deaths increased sharply among people aged between 15 and 19 years. The rate reached a peak between the ages of 25 and 39 years, then gradually declined with increasing age. See graph 1.

The avoidable *suicide* death rate was significantly higher in men than women. The rate in men significantly declined during the reported period. Rates would be expected to further decline if the trend continues.

By contrast, the avoidable *suicide* death rate in women did not change significantly and is expected to remain the same in 2008. See graph 2.

Disadvantage and location

There were no significant differences in avoidable *suicide* death rates in men by socio-economic status.

Men from rural Victoria had a significantly higher avoidable *suicide* death rate than men from metropolitan areas in four of the reported seven years (1997-2000). See table 1.

There were no significant differences in avoidable *suicide* death rates in women by socio-economic status or in women in rural compared to women in metropolitan areas. See table 2.

General information

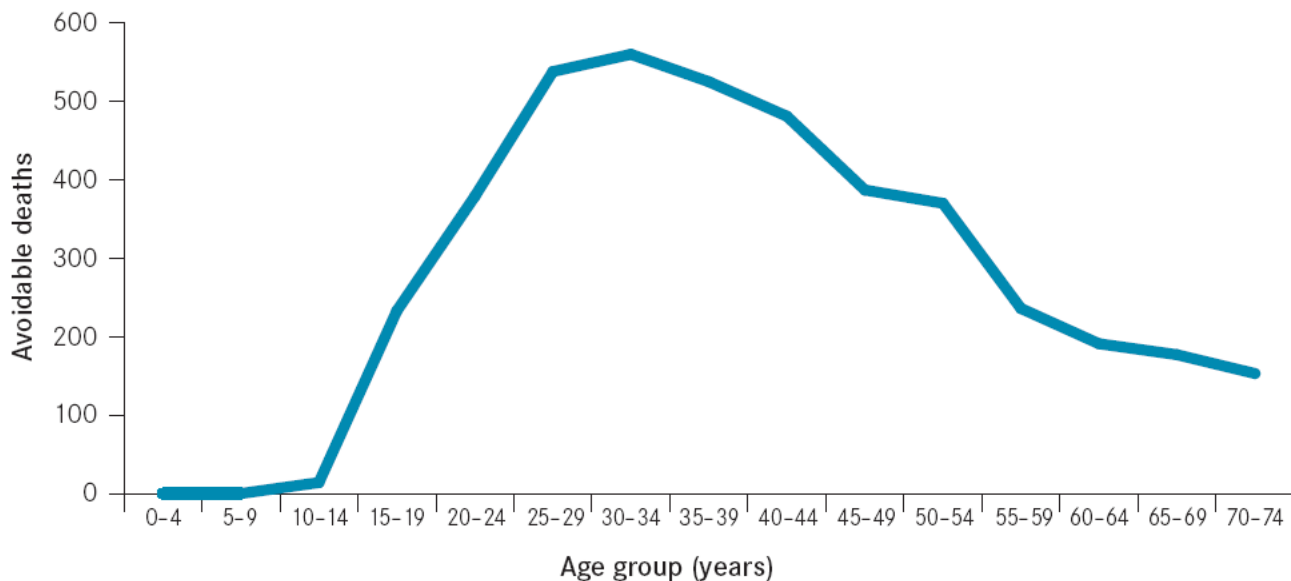
This fact sheet is an adjunct to *Avoidable Mortality in Victoria: Trends between 1997 and 2003*, the first comprehensive report on AM in Victoria which provides a detailed examination of the 10 most common causes of AM, which together account for 50% of deaths in the state during this period.

The report is compiled via a simple and practical Victoria-wide, population-based method of counting AM rates.

Declining trends in AM may indicate improvements in the healthcare system.

Increasing trends in AM may indicate shortcomings in the healthcare system, such as a lack of use of effective interventions.

Graph 1: Avoidable suicide deaths by age from 1997 to 2003



Graph 2: AM rates in Victoria (1997 to 2003) due to suicide

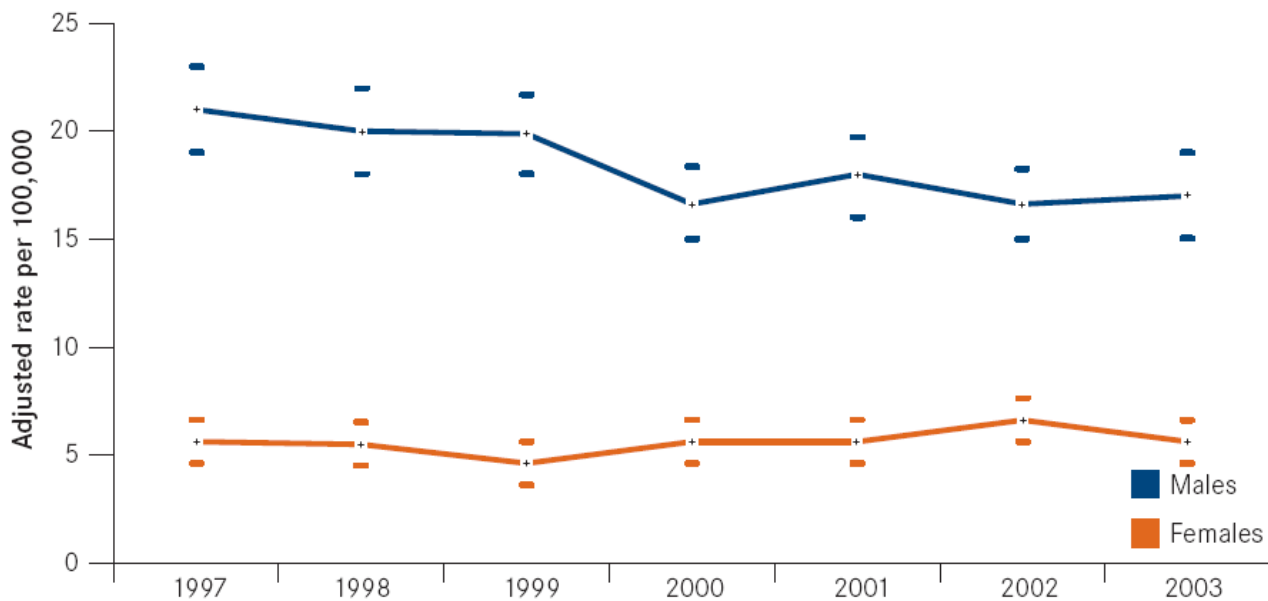


Table 1: Adjusted suicide AM rates (95% CI) in Victorian males (1997–2003)

Suicide	Males (rate per 100,000)																				
	1997		1998		1999		2000		2001		2002		2003								
	Adjusted	95%CI	Adjusted	95%CI	Adjusted	95%CI	Adjusted	95%CI	Adjusted	95%CI	Adjusted	95%CI	Adjusted	95%CI							
Victoria	21	19	23	20	18	22	20	18	22	17	15	18	18	16	20	17	15	18	17	15	19
Metropolitan	19	17	21	17	15	19	17	15	19	15	13	17	17	15	18	16	14	18	16	14	18
Rural	26	22	30	27	23	31	26	22	31	21	18	25	22	18	25	19	15	22	20	16	23
IRSED category:																					
Most disadvantaged	22	18	27	19	15	23	20	16	24	16	13	20	18	14	22	16	12	20	17	14	21
2	23	19	28	22	18	27	22	17	26	20	16	24	19	15	23	18	14	21	19	15	22
3	24	19	29	24	19	28	21	17	26	17	13	21	21	17	26	16	12	19	18	14	21
4	20	16	24	21	17	26	18	14	21	14	11	18	18	14	22	19	15	23	18	14	22
Least disadvantaged	15	11	19	13	10	17	19	14	23	15	11	19	13	9	16	14	10	17	14	10	17
ARIA category:																					
Accessible	21	14	29	32	22	41	32	23	41	21	14	29	26	17	34	17	10	24	21	13	28
Highly Accessible	21	19	23	19	17	21	19	17	21	16	14	18	18	16	19	17	15	18	17	15	18
Moderately accessible	27	14	40	27	13	40	26	13	40	27	13	40	11	3	20	13	4	22	21	10	33
Rate ratios:																					
Male:Female	3.67			3.64			4.28			2.96			3.25			2.54			3.05		
Rural:Metro	1.36			1.56			1.53			1.43			1.31			1.19			1.24		
Most:Least disadvantaged	1.50			1.44			1.08			1.10			1.44			1.17			1.28		
Least:Most accessible	1.30			1.41			1.41			1.67			0.65			0.76			1.26		

Note: Adjusted rates are significantly different (P<0.05) when their 95% confidence intervals do not overlap
Adjusted rates and rate ratios in **RED** are significantly greater (P<0.05) than the corresponding rate for Victoria or 1, respectively
Adjusted rates and rate ratios in **GREEN** are significantly lower (P<0.05) than the corresponding rate for Victoria or 1, respectively

Table 2: Adjusted suicide AM rates (95% CI) in Victorian females (1997–2003)

Suicide	Females (rate per 100,000)																				
	1997		1998		1999		2000		2001		2002		2003								
	Adjusted	95%CI	Adjusted	95%CI	Adjusted	95%CI	Adjusted	95%CI	Adjusted	95%CI	Adjusted	95%CI	Adjusted	95%CI							
Victoria	6	5	7	6	5	7	5	4	6	6	5	7	6	5	7	7	6	8	6	5	7
Metropolitan	6	5	7	6	4	7	5	4	6	6	4	7	6	5	7	7	5	8	6	5	7
Rural	5	4	7	5	3	7	4	3	6	6	4	8	5	3	7	6	4	8	5	4	7
IRSED category:																					
Most disadvantaged	4	2	6	6	3	8	4	2	6	5	3	8	6	4	8	7	4	9	6	3	8
2	7	4	9	4	2	6	4	2	5	5	3	7	5	3	8	7	5	10	6	4	8
3	4	2	6	6	4	9	5	3	8	7	4	9	5	3	7	7	5	10	5	3	7
4	7	4	9	5	3	7	3	2	5	4	2	5	6	3	8	6	4	8	5	3	7
Least disadvantaged	7	4	9	6	4	9	7	4	9	7	4	9	6	4	9	5	3	7	7	4	9
ARIA category:																					
Accessible	5	1	9	10	5	16	4	0	7	4	0	7	3	0	6	5	1	9	5	1	9
Highly Accessible	6	5	7	5	4	6	5	4	6	6	5	7	6	5	7	7	6	8	6	5	7
Moderately accessible	10	2	18	3	0	7	2	0	5	0	0	6	0	0	6	4	0	8	3	0	7
Rate ratios:																					
Male:Female																					
Rural:Metro	0.91			0.95			0.89			1.02			0.81			0.91			0.96		
Most:Least disadvantaged	0.59			0.92			0.62			0.81			0.90			1.28			0.81		
Least:Most accessible	1.73			0.53			0.34			0.00			0.00			0.51			0.54		

Note: Adjusted rates are significantly different (P<0.05) when their 95% confidence intervals do not overlap
Adjusted rates and rate ratios in **RED** are significantly greater (P<0.05) than the corresponding rate for Victoria or 1, respectively
Adjusted rates and rate ratios in **GREEN** are significantly lower (P<0.05) than the corresponding rate for Victoria or 1, respectively

Information in this fact sheet is taken from the report, *Avoidable Mortality in Victoria: Trends between 1997 and 2003*.