



WGCMA

**WEST GIPPSLAND
CATCHMENT MANAGEMENT AUTHORITY
PRESENTATION**

TO

**DEPARTMENT OF HUMAN SERVICES
DRINKING WATER REGULATORY UNIT SEMINAR**



WGCMA

CATCHMENT MANAGEMENT IN VICTORIA

- History is varied with a range of departments, community based authorities and Local Governments addressing catchment issues.
 - In many areas, there were strong river trusts:
 - In 1995, Catchment and Land Protection Boards were established and in 1997, Catchment management Authorities were formed.
- Why CMA's?**



WGCMA

CATCHMENT MANAGEMENT IN VICTORIA

- 1. Ecologically Sustainable Development**
- 2. Community Empowerment**
- 3. Integrated Management**
- 4. Targeted Investment**
- 5. Accountability**
- 6. Administrative Efficiency**



WGCMA

CATCHMENT MANAGEMENT IN VICTORIA

- **How do we deliver on the Purple Book?**
 - **Statement of Obligations on the Way?**
- **Co-ordinating the Development and Implementation of the Regional Catchment Strategy, and other relevant plan strategies. Eg. Water Quality Plans**
- **Working with relevant partners in developing the Rolling Investment Plan.**
- **Actually fixing up the Catchment.**



WGCM



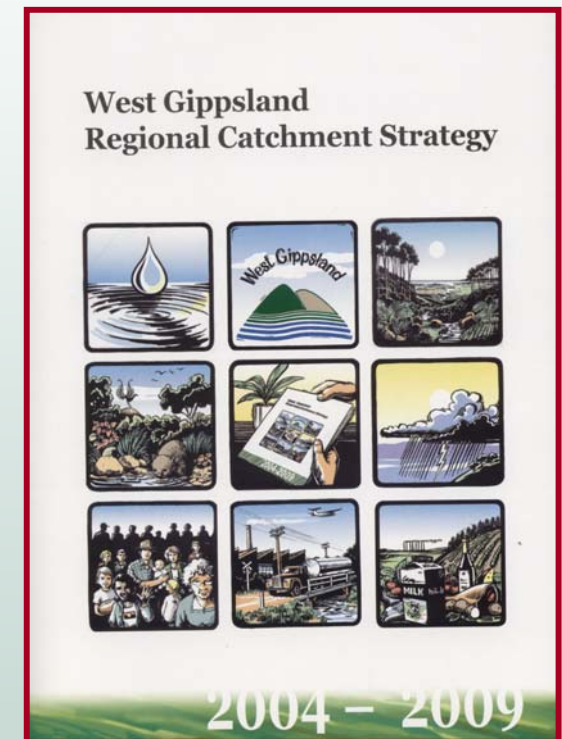


WGCMCA

REGIONAL CATCHMENT STRATEGY

What is the Regional Catchment Strategy?

- Primary integrated framework for land, water & biodiversity
- Overarching strategic NRM document for region
- Engages regional stakeholders from community, industry and government
- Vision and aspirations for the region
- Foundation for investment decisions
- Integrates a range of national, state and regional policies and aligns our actions
- CMA coordinates development & implementation





WGCMA

WHAT IS THE REGIONAL CATCHMENT INVESTMENT PLAN

- The RCIP is a very good concept that should see the co-ordination of catchments investment in the region.
- It does include Commonwealth & State Funds but not all investment streams. Doesn't include funds provided to Departments.
- Currently a 15 to 18 month process. Which means it is too complex and too detailed.
- Has potential if focused at outcome program level and responsibility is given to Boards.
- Currently CMA's have to bid every year for funds including for Corporate and Statutory costs.



WGCMA

CATCHMENT MANAGEMENT IN VICTORIA

INDUSTRY INVESTMENT

	2001/02	2002/03	2003/04	2004/2005
CMA Revenue History	81,512,702	96,877,195	126,955,512	145,813,286
CMA Expenditure History	71,925,829	90,668,522	119,884,870	135,399,744
Cash on Hand	47,737,370	61,263,788	76,898,854	75,875,906
CMA Number of Employees	319	329	394	468
CMA Annual Surplus	9,586,873	6,208,673	9,827,121	\$10,413,542

WGCMA INVESTMENT

	2000/01	2001/02	2002/03	2003/04	2004/2005
Income	9,221,888	8,605,053	9,230,954	14,833,863	20,452,282
Expenditure	7,160,727	8,033,935	9,467,711	13,509,854	18,339,532
Surplus	2,061,161	571,122	(236,753)	1,323,297	2,112,750
Staff	48	54	72	77	86



WGCMA

THE WEST GIPPSLAND REGION

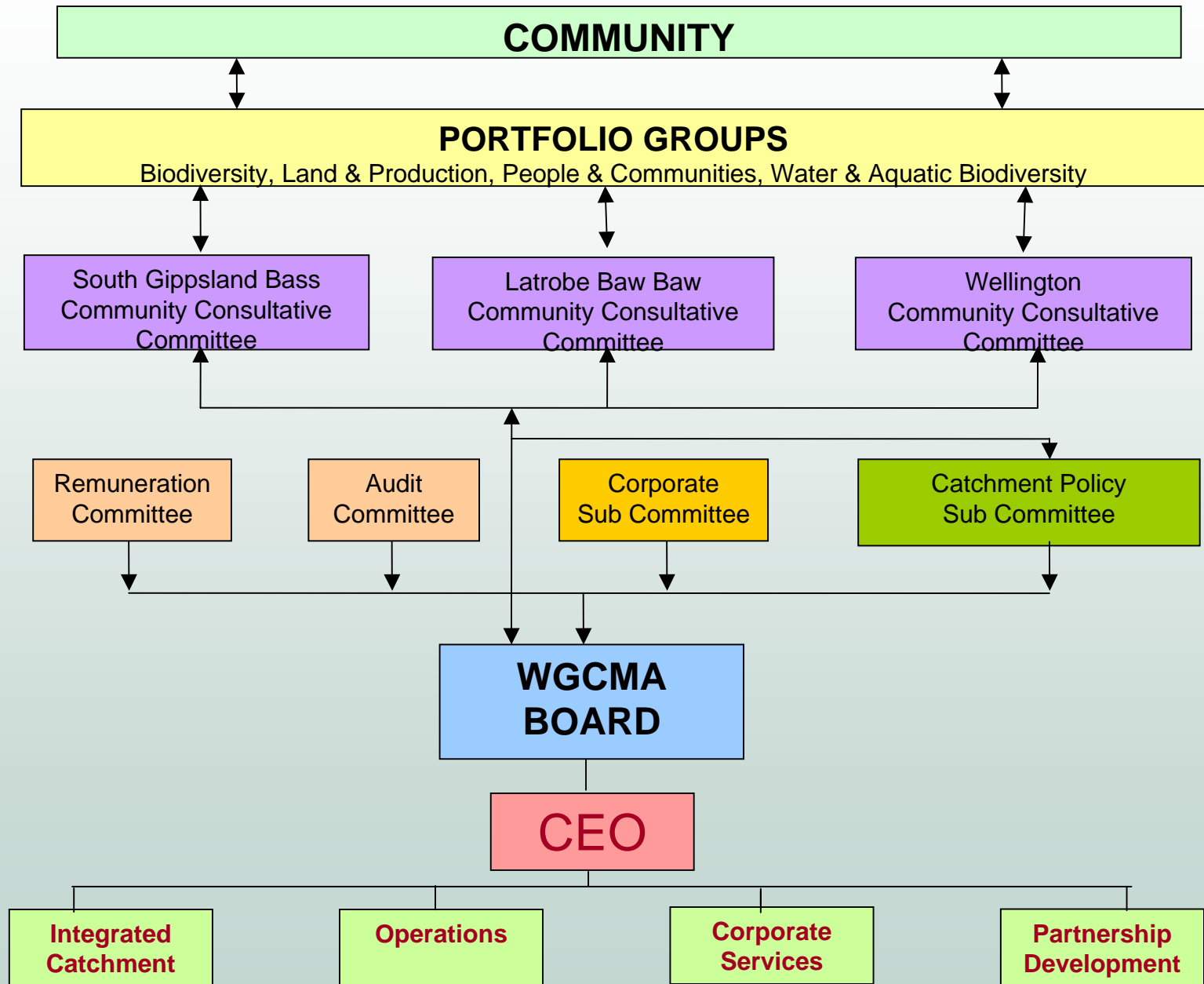
- 17,685 km²
- Population 169,000
- 3 River Basins - Latrobe, Thomson, South Gippsland
- Diverse coast - Gippsland Lakes, Anderson & Corner Inlets, Wilsons Promontory, Bunurong Coast, Ninety Mile Beach
- 6 Terrestrial & 4 Marine Bioregions
- 40% public land, 15.5% parks
- *Gunai/Kurnai & Kulin lands*
- 95% State's electricity
- 27% Melbourne's water
- Two thirds Australia's total oil
- 100% State's gas
- 30% State's dairy industry





WGCMA

OUR ORGANISATION





WGCMA

WGCMA IN ACTION



**OPERATION
CREWS AT WORK**





WGCMMA

RESULTS ACHIEVED

TRARALGON CREEK



1997

2001



RESULTS ACHIEVED



WGCMMA



1999



AVON RIVER



2001

RESULTS ACHIEVED



WGCMCA



BASS RIVER



1999

2001





WGCMA

WHY ARE WE PREPARING WQMPs AND WHAT WILL THEY MEAN TO GOVERNMENT AGENCIES IN GIPPSLAND?

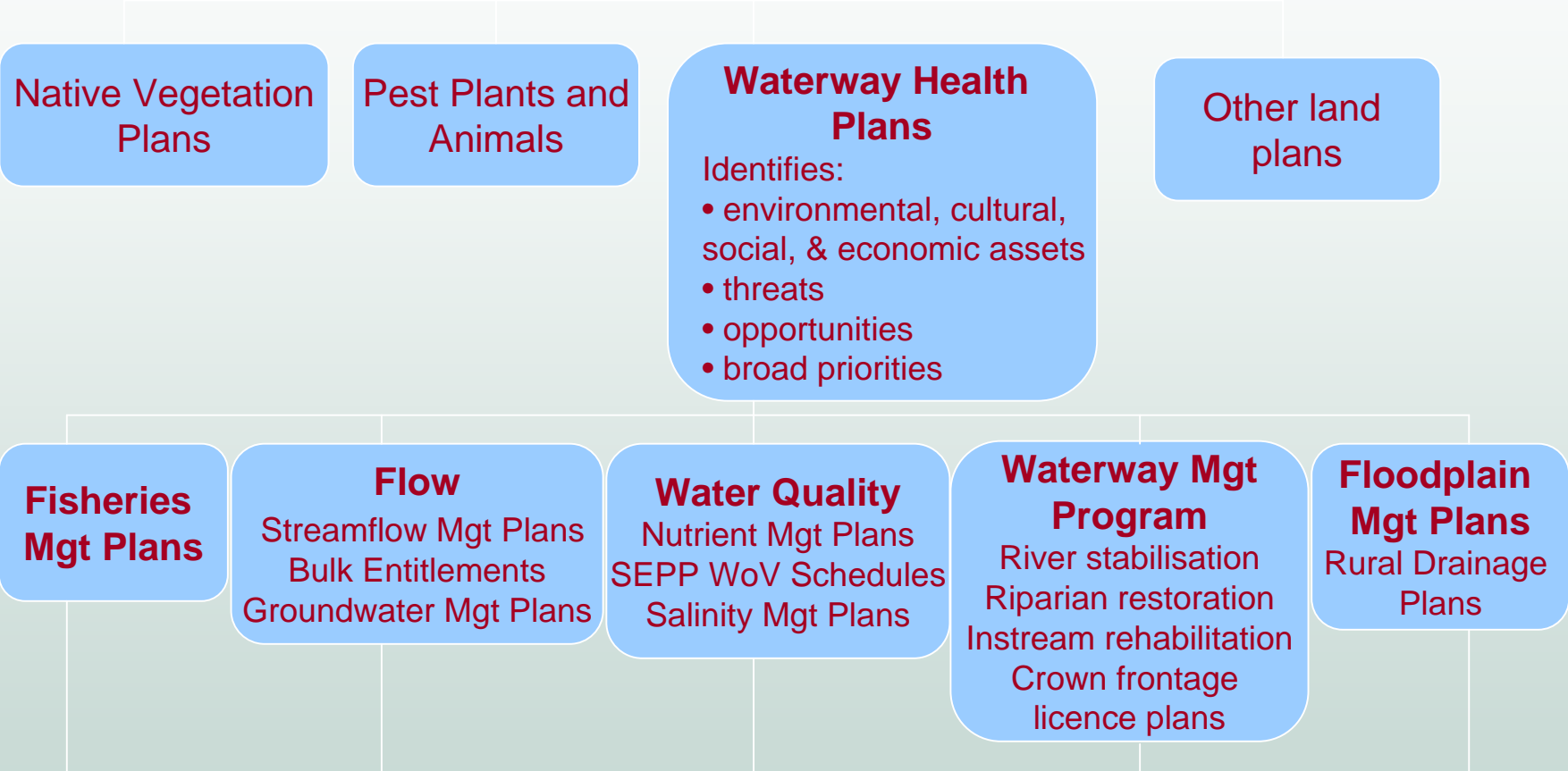
- The WQMPs are the basic tool to provide direction for projects to achieve protection of water quality from threatening processes and for restoration of impacted waterways and lakes
- The water quality of the Gippsland Lakes is a focus issue because of major toxic algal blooms
- Each CMA has a responsibility to have a Water Quality Management Plan as specified in their Regional Catchment Strategies



WGCMA

Regional Catchment Strategies (CMAs)

sets regional priorities across issues and catchments



Targets from each are integrated and relate back to mgt values. Articulated as resource condition objectives.

Multi-benefit - integrated 3 year works program



WGCMA

GIPPSLAND'S WATER QUALITY PLAN

- Endorsed in 2005
- Includes all priority action for Gippsland
- Cost over 5-10 years is \$70 - \$80 million
- Current investment about \$1 million per annum
- Across River Health, Salinity, Nutrient Reduction etc.



WGCMA

WHY DO WE GET INVOLVED IN WATER QUALITY?

- **Monitor the condition of our waterways**
- **Important for managing the Environmental Water Reserve**
- **Relatively easy and cheap to measure Water Quality**
- **Develop guidelines and objectives**
- **Assist community monitoring**
- **Help community to understand Water Quality and our Plan**
- **Not usually because of Drinking Water Requirements**



WGCA



Modern household tanks fitted with filtration devices can produce water of a higher quality than existing urban reticulation systems



WGCA

WHAT WATER QUALITY DO WE MEASURE?

- Dissolved Oxygen
- Electrical Conductivity
- Turbidity
- pH
- Suspended Solids
- Nitrogen
- Phosphorous
- Metals



WGCMA

WHAT GUIDELINES DO WE USE?

- State Environment Protection Policy (Waters of Victoria) 2003
 - Schedule F5 - Latrobe, Thomson and Merrimans Creek
 - Schedule F3 – Waters of the Gippsland Lakes
- SEPP schedules F3 and F5 are due for review (06/07) and renewal (07/08)



WGCMA

WHAT IS GRWMP?

- Partnership approach to monitoring water quality and quantity throughout Gippsland
- Share monitoring costs and data
- Access to “non-public” data
- Significant cost-savings
- Share investigations
- Availability of Regional Co-ordinator for projects



WGCMMA

WHAT ARE WE TRYING TO FIX

Agriculture	Animal/crop farming runoff, agricultural chemical transport and application, waterway disturbance by grazing animals, dead stock
Environmental hazards	Bushfire, storms/floods, geomorphology, riparian condition, groundwater/surface water interaction
Human Access	Illegal dumping, recreational activities
Industry	Chemical, sewerage waste discharges, chemical spills, fire, erosion, mining activities
Forestry	Timber harvesting, chemical use, operational activities, fire management
Waste Management facilities	Treatment plants, domestic wastewater systems, reticulation, landfills
Roads	Waterway crossings, drainage management, spills of hazardous materials, erosion and runoff
Urban development	Stormwater discharges, spills and illegal dumping, flow and flood mitigation



WGCMA

HOW CAN WE DO BETTER

- Working with Water Authorities
 - South Gippsland Water offset project
 - Gippsland Water and Risk Management Plan
 - Safe Drinking Water Act requires these.
- Acting on water quality data
 - Using this information to drive our planning and operational work



WGCA

SPECIAL AREA PLANS

- What are they?
 - Can be declared under CaLP Act
 - Some Water Supply Protection Areas became Special Area Plans
- Can we use them?
 - Haven't been used for some time
 - Significant cost in implementing them



WGCMA

THE WAY FORWARD IS COLLABORATION

Some opportunities

- Tarago Catchment Management Plan, facilitated by Melbourne Water;
- Southern Rural Water's development of Risk Management Plans for Lake Glenmaggie and Blue Rock Reservoir;
- The Narracan Creek project, to manage risks associated with intensive agricultural activities in close proximity to waterways;
- The response to the management of immediate and long-term risks following the bushfire in the Moondarra Reservoir catchment.



WGCMA

WE NEED A PRO-ACTIVE APPROACH

- **Community won't accept re-active approach on it is too risky**
 - Sydney Water
 - South Gippsland Water
- **We need to be pro-active**
 - Has to be catchment management approach
 - Prevention of contamination is better than removal
 - All agencies need to co-operatively understand responsibilities
 - Collectively seek funding for these pro-active actions and plans



WGCMA

WHAT SHOULD WE BE TRYING TO ACHIEVE?

Objectives	Action Items Examples of proposed actions identified in the Narracan Creek and Easterbrook Creek Risk Management Plans
Proactive not reactive response.	<ul style="list-style-type: none"> Identify hazard, assess risks, and take action to reduce risks in potable water catchment.
Improvement of stream flows producing more reliable environmental and town water supplies.	<ul style="list-style-type: none"> Management of water allocations Manage catchment inflows
Notification from upstream agencies of changes in water quality.	<ul style="list-style-type: none"> Develop catchment overlays with clear requirements and responsibilities Water quality monitoring sites established for early warning stream events
Reduce the microbiological organism, turbidity and nutrient load of Narracan Creek and Easterbrook Creek. Lower potential for algae blooms.	<ul style="list-style-type: none"> Septic Tank survey, audit, and repair. Establish effective dairy effluent control Reduce stock access to streams Establish native buffer zones in priority areas
Communities aware of water supply protection.	<ul style="list-style-type: none"> Develop communication avenues and engagement activities with community.
Reduce the risk of chemicals entering the water supply	<ul style="list-style-type: none"> Better understanding and control of chemical use in catchment



WGCMA

HOW CAN WE ACHIEVE THIS?

- **Utilise existing local planning tools such as Environmental Significance Overlays to better define potable water catchments, and document risks and hazards.**
- **Understand and apply the specific function of Special Area Plans defined under the Catchment and Land Protection (CALP) Act. Catchment Management Authorities created under the CALP Act must prepare and establish plans of action to address land management issues that currently or potentially impact on water quality within defined special catchment areas.**
- **Develop, endorse and publicise a common Potable Water Catchment Management Policy.**
- **Support the Narracan Creek project as a pilot for understanding the interagency roles and responsibilities.**
- **Nominate a lead agency and declare support of project officers from relevant agencies to coordinate and manage the Narracan Creek Catchment project.**



WGCMA





WGCMMA



QUESTIONS