

State health emergency response plan

Second edition – 2009

medical officer

paramedics

hospital

first aid

assistance teams

emergency

The revised version of the State Health Emergency Response Plan (SHERP) (*second edition*) came into effect on 1 December 2009

A Victorian
Government
initiative





Background

Every day throughout Victoria health and medical organisations respond to emergencies affecting people's lives. When the scale of health emergencies goes beyond day to day business arrangements a coordinated, multi-agency response is needed to ensure scarce resources can be applied in the most efficient and effective way.

The mechanism for this is the State Health Emergency Response Plan (SHERP), which is a sub plan of the Victoria State Emergency Response Plan. SHERP is a whole-of-health response plan to emergencies including mass casualty incidents, complex trauma events, mass gatherings and other incidents impacting people's health.

It provides all necessary information to enable an effective, coordinated health and medical response.

SHERP was introduced in December 2006 replacing Medical Displan and has now been revised to capture learning from recent emergencies. This brochure outlines the key changes to the arrangements.

Key changes in the second edition of SHERP

The State Health Emergency Response Plan (SHERP) provides a framework to ensure a coordinated whole-of-health approach to emergencies including mass casualty incidents, complex trauma events, mass gatherings and other incidents impacting people's health.

Since the introduction of SHERP there have been a number of significant emergencies and events including the Burnley Tunnel crash, the Kerang train crash, Westpoint chemical fire, and the 2009 Victorian bushfires.

SHERP is now aligned with the review of the State Emergency Response Plan (Part 3 of the Emergency Management Manual Victoria)

Health Incident Management

Significant changes to SHERP relating to health incident management include:

- highlighting the important relationship between the Emergency Management Team and the Incident Controller in the development of the incident strategy
- the description of Functional Command and how it relates to health response
- the management of emergencies across a number of sites (sectors)
- the escalation of the Health Incident Management Team across incident levels

Scene management

A new scene management model is included in the second edition which includes the management of people who have no obvious physical injuries but require emergency relief including psychological first aid.

General practice sub-plan and field primary care response sub-plan

The second edition includes two sub-plans which look at the involvement of general practice and primary health in emergencies from response through to relief and recovery.

Appendices

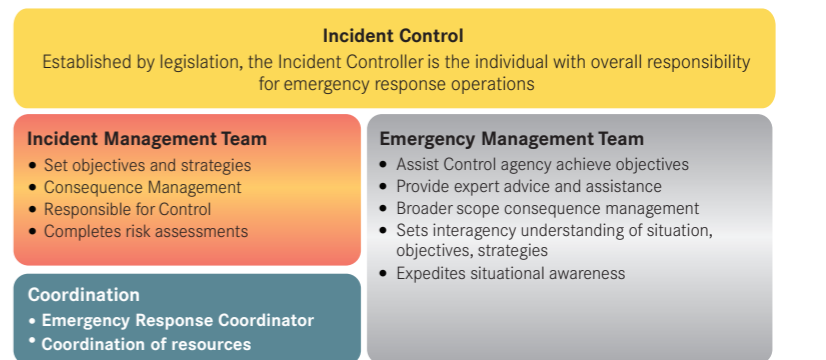
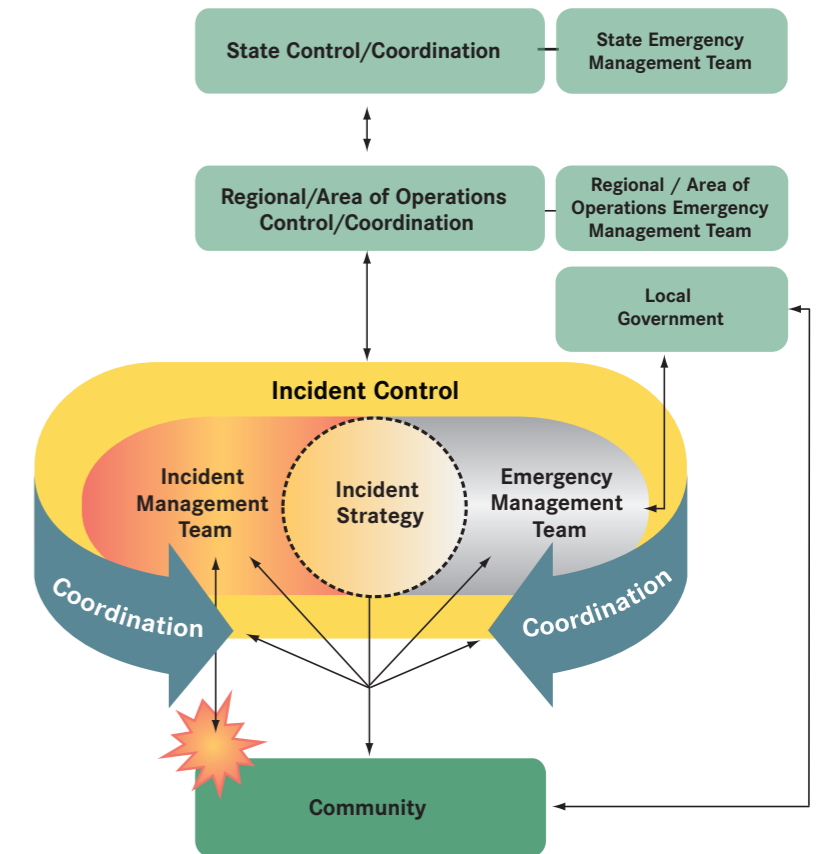
SHERP includes a number of useful appendices including role descriptors for key functions and key facilities which can be removed and used as aide-memoire, a summary of SHERP, first aid, a public events and mass gatherings appendix and useful links to maps and databases.

SHERP can be applied as a framework for health planning using the public events and mass gatherings appendix.

Agency Interdependencies

The Incident Controller will form an Incident Management Team (IMT) to manage the delegated responsibilities of planning, operations and logistics relating to overall control of the incident. If an emergency requires a response by more than one agency the Incident Controller will form an Emergency Management Team (EMT). This team consists of the Incident Controller, support and recovery functional / agency commanders, an Emergency Response Coordinator and other specialist staff as required. The Emergency Management Team provides expert advice and support, and identifies management strategies for potential consequences of the emergency to the Incident Controller.

The incident strategy describes the direction of actions based on the conditions prevailing at a given time in the life of the incident. The Incident Controller, the Incident Management Team and the Emergency Management Team collaborate on the incident strategy, to ensure a common understanding and a unified approach.



Management Team

A Health Incident Management Team (HIMT) may be established by the Health Commander to enable coordination and management of the health response, depending on the emergency. The HIMT provides the incident control system (ICS) functions of; planning, operations and logistics to support the health response.

The Health Commander represents all responding health agencies in the HIMT as a member of the Emergency Management Team, supporting the Incident Controller.



The second edition of Victoria's State Health
Emergency Response Plan (SHERP) is available.
Download a copy from our website:
www.dhs.vic.gov.au/emergency/sherp

Produced by the Department of Health,
Victorian Government Melbourne

December 2009

Copyright State of Victoria, Department of Health 2009

This publication is copyright. No Part may be reproduced by
any process except in accordance with the provisions of the
Copyright Act 1968.

Authorised by the State Government of Victoria,
50 Lonsdale Street, Melbourne.

Printed on <XXXX>